

- Source Factory Direct Supply || OEM/ODM Customized Solutions || Professional Technical Consulting || Global Rapid Response Team

# MuxiPrecision

2026



- FIBER ▪ CO2 ▪ YAG/UV



Muxi Chuangzhi Tech Ltd. provide a centralized supply chain for premium Laser consumables, including but not limited to:

**Protection Windows:** Ultra-low absorption windows using JGS1 Grade A Synthetic Quartz.

**Focus & Collimation Lenses:** High-precision optics with superior surface quality (S/D 10/5).

**Laser Nozzles:** Double chrome-plated and high-speed nozzles compatible with Precitec, Raytools, WSX, and Bodor heads.

**Ceramic Rings:** High-conductivity and durable sensor holders for all major cutting heads.

**Source Factory Guarantee:** As a production-oriented enterprise, we control the entire process from raw material selection to precision coating, ensuring competitive pricing without compromising quality.

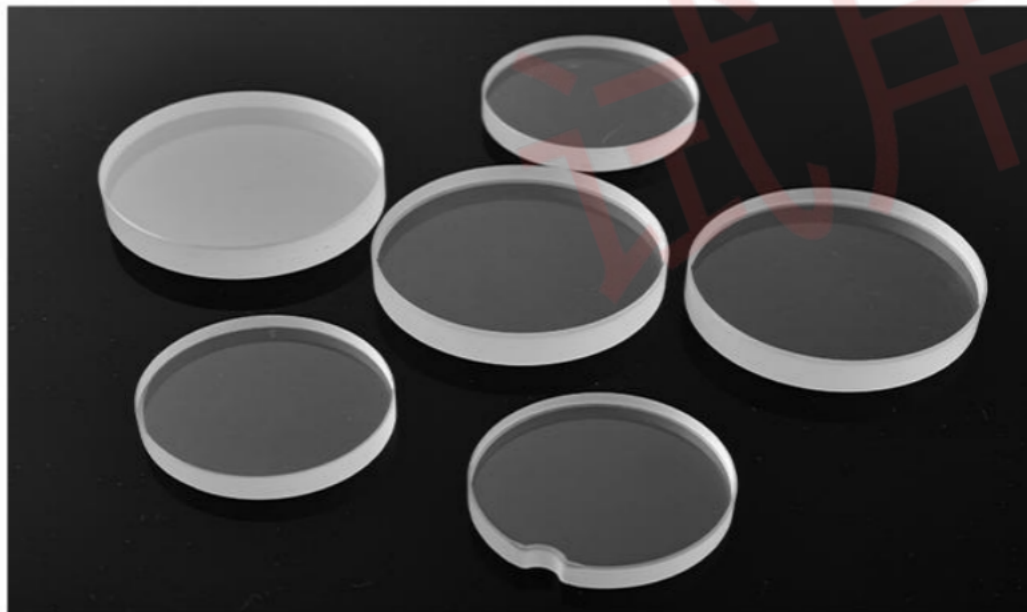
**High-Power Specialists:** We are one of the few suppliers capable of providing optics that withstand 40kW+ Laser power with minimal thermal lens effect.

**Dust-Free Production:** All optical components are processed in Class 10,000 cleanrooms to ensure zero contamination.

**Technical Support:** We don't just sell parts; we provide solutions. Our team helps customers optimize their cutting parameters based on their specific machine models

**Driven by a commitment to quality and integrity,** Muxi Chuangzhi Tech serves clients across the globe, including Russia, Vietnam, Kenya, Mexico, and Ireland. We pride ourselves on building long-term partnerships with industrial distributors and large-scale metal fabrication plants.

# Protective Windows



\* More than 50pcs can be customized

## ✓ Various Specifications

- 18\*2 20\*2 20\*3 20\*4 21.5\*2
- 22.35\*4 24.9\*1.5 25\*2/3 25.4\*4/5
- 28\*4(27.9\*4.1) 29.7\*4.7 30\*1/1.5/2/3/4
- 30\*5 30\*5(Gap)
- 34\*5<sub>0-</sub> 35\*4 36\*3 37\*7<sub>0-30kv</sub>
- 38\*2/3 40\*5 42\*3 50\*2 55\*1.5

\* More than 100 specifications are available

## ✓ Sealing Ring



Seal Ring(white)

- 20.5\*16\*2.4 (WSX)
- 21\*15\*2.7 (CQWY)
- 29.8\*24\*3 (Raytools)
- 32.2\*24\*3.55 (Raytools)



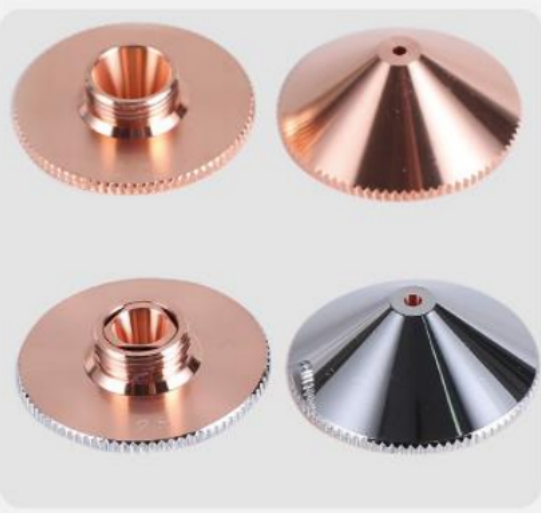
Seal Ring(yellow)

- 36\*29.5\*3 (Precitec)
- 40.35\*33.6\*2.9 (Precitec1.0-yellow)
- 44\*33\*2.7\*2 (Precitec2.0-yellow)

# Laser Nozzle

Sample pictures: Single & Double layers, Caliber 0.8–10.0mm

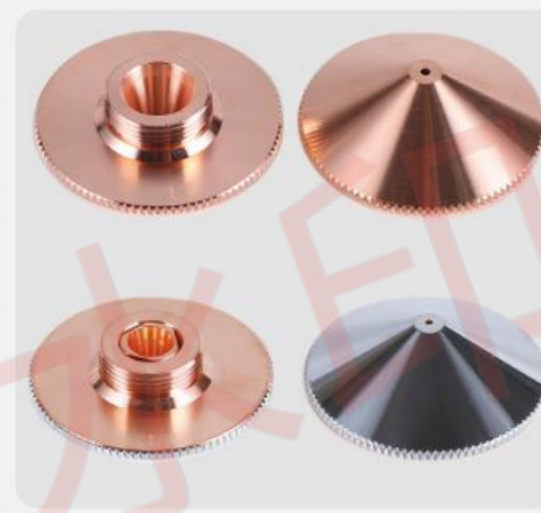
S28-A



S28-B



S32-A



3D



Precitec



Bodor



Bystronic



ECU



\* More than 50 specifications are available

# Laser Ceramic



\* More than 50 specifications are available

# Focusing/Collimating Lens



## Various Specifications Handheld Welding Machine

1 Pc/set:

- $\Phi 20 * F50/60/75/100$
- $\Phi 20 * F120/150$

\* For CQWY/QiLin Cutting Head

1 Pc/set:

- $\Phi 25.4 * F63/100/125/150/200$
- $\Phi 28 * F63/125/150/200/250$
- $\Phi 30 * F75/100/120/125/150/200$

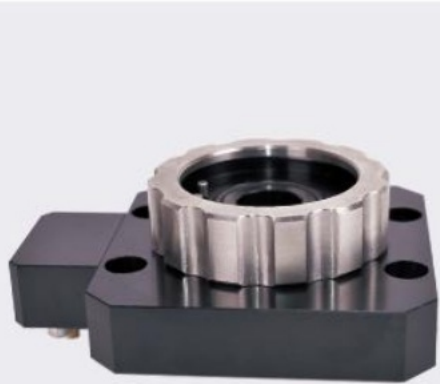
2 Pcs/set:

- $\Phi 28 * 75/100/125/150$
- $\Phi 30 * 75/100/125/150/155/190.5/200$
- $\Phi 37 * 100/125/150/200$
- $\Phi 38.1 * 200$

# Collimating & Focusing Lens



# Nozzle Connector & Other series



Raytools BT230



Raytools BM114



Bodor-3D



WSX NC30/NC30B



Laser Induction Cable



Optical Cable



Fiber Output Cable